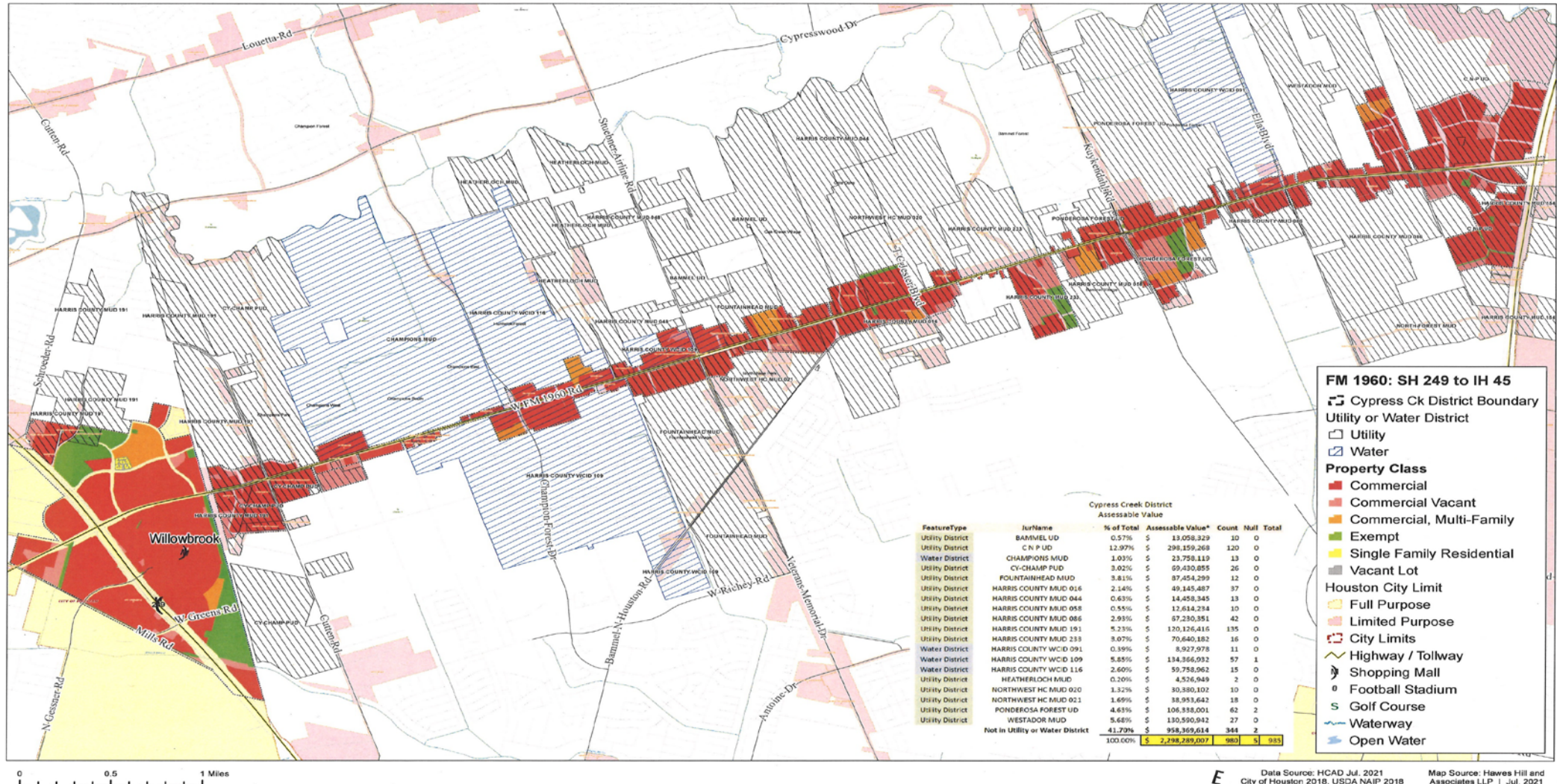


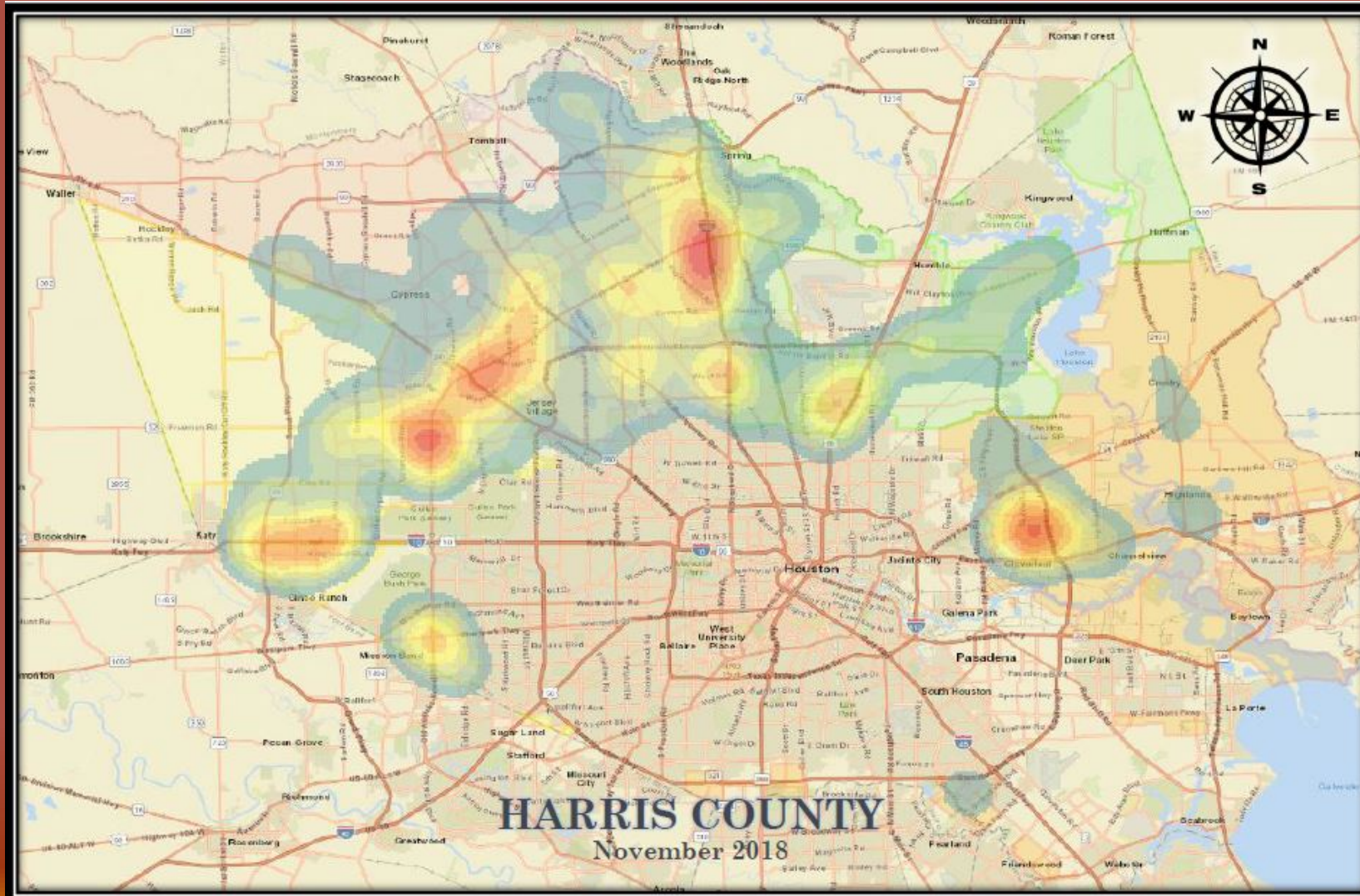


SAFETY AND SECURITY PLAN

DEFINING THE AREA

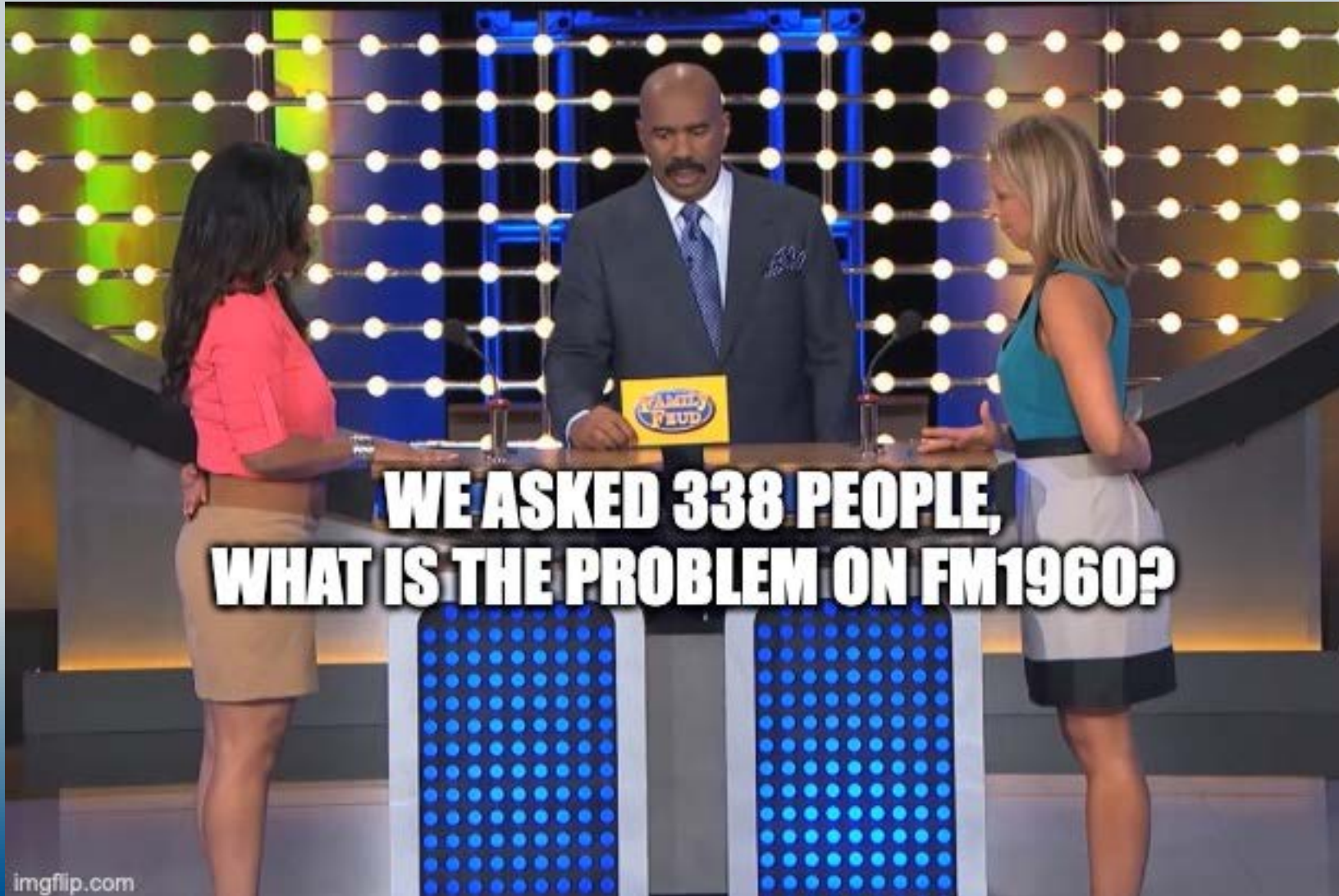


THE DREADFUL RED



SURVEY RESULTS

FOR PURPOSES OF THE SURVEY CYPRESS CREEK PARKWAY/F1960 REFERS TO FM1960 AT HWY 249 EAST TO IH45



SURVEY RESULTS

FOR PURPOSES OF THE SURVEY CYPRESS CREEK PARKWAY/F1960 REFERS TO FM1960 AT HWY 249 EAST TO IH45



SURVEY RESULTS

FOR PURPOSES OF THE SURVEY CYPRESS CREEK PARKWAY/F1960 REFERS TO FM1960 AT HWY 249 EAST TO IH45

338 Survey responses to a survey of the General Public and Chamber Members

33% of respondents have lived in the area 31 years or longer.

81% of respondents were Somewhat, Very or Extremely anxious living in the area.

87% of respondents stated crime is Much, Somewhat or Slightly worse since 2016, or the length of time they have resided in the Corridor.

95% of respondents patronize Corridor business/restaurants, Regularly, Occasionally or Rarely.

60% of respondents stated they do not feel safe patronizing businesses in the Corridor.

54% state their reason for relocating out of area is they “No Longer Feel Safe”



SURVEY RESULTS

FOR PURPOSES OF THE SURVEY CYPRESS CREEK PARKWAY/F1960 REFERS TO FM1960 AT HWY 249 EAST TO IH45

338 Survey responses to a survey of the General Public and Chamber Members

Respondents were asked to rank the most Problematic topics to the least in their opinion;

47% of respondents ranked “Crime” as most problematic; with other following below

Panhandlers/Homeless

Graffiti

Vacant/Abandoned Buildings (Tied with Graffiti)

Signs/Visual Noise



SURVEY RESULTS

FOR PURPOSES OF THE SURVEY CYPRESS CREEK PARKWAY/F1960 REFERS TO FM1960 AT HWY 249 EAST TO IH45

338 Survey responses to a survey of the General Public and Chamber Members

Respondents were asked to rank what changes would most IMPROVE the Corridor;

41% Stated "More Law Enforcement"

28% Fewer Homeless/Panhandlers

21% Fewer Empty Buildings

19% Sign Code Enforcement

18% Better Lighting

18% Litter, Bandit, Graffiti Abatement



BROKEN WINDOW THEORY

broken windows theory, academic theory proposed by James Q. Wilson and George Kelling, in 1982 that used broken windows as a metaphor for disorder within neighborhoods. Their theory links disorder and incivility within a community to subsequent occurrences of serious crime. (Britannica.com)



They saw serious crime as the final result of a lengthier chain of events, theorizing that crime emanated from disorder and that if disorder were eliminated, then serious crimes would not occur.

Scholars generally define two different types of disorder.

The first is **physical disorder**, typified by vacant buildings, broken windows, abandoned vehicles, and vacant lots filled with trash.

The second type is **social disorder**, which is typified by aggressive panhandlers, noisy neighbors, and groups of youths congregating on street corners.

The line between crime and disorder is often blurred, with some experts considering such acts as prostitution and drug dealing as disorder while many others classify them as crimes. While different, these two types of disorder are both thought to increase fear among citizens.



AS AN EXAMPLE:

- Consider a building with a few broken windows. What's next?
- If they are not repaired, the tendency is vandals will break more. What's next?
- Eventually they break into the building and if unoccupied, perhaps they become squatters. What's next?
- Squatters and vagrants use the space for drug use. What's next?
- In an effort to fund their drug use, they begin panhandling, committing petty theft and . What's next?
- Petty thefts turn into home burglaries, prostitution and drugs introduce gangs, and gangs introduce violent crimes such as armed robberies and car jackings.
- By now, the respectable people who will no longer tolerate this environment have fled the community and have been replaced by those who are more inclined to tolerate and accept the crime and social disorder.



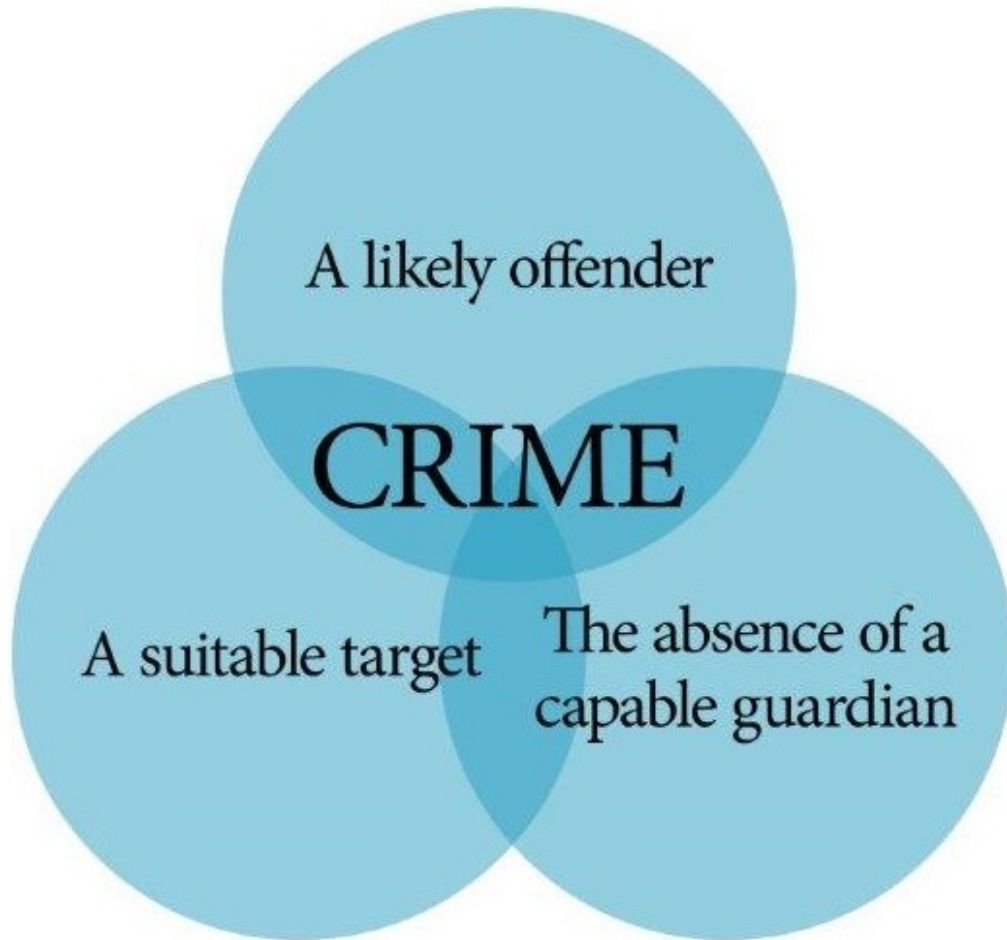
It also explains how the mere appearance of crime and social disorder:

- Creates a sense of fear
- Creates a social signaling of crime
- Dissuades the use of communal spaces, and
- Causes respectable people to flee



ROUTINE ACTIVITIES THEORY

3 Variables



Motivation of Offender- What are their
Needs/Desires

Suitable Target- Who/What is Available

Absence of Capable Guardian-
Police, Cameras, Crowds



A SUITABLE TARGET CAN INCLUDE A PERSON, AN OBJECT OR A PLACE.



C.R.A.V.E.D.



Mark Herman, Harris County Constable Precinct 4
November 3, 2021 · 🌐

CONSTABLES SEEK THE PUBLIC'S HELP IN IDENTIFYING AGGRAVATED ROBBERY SUSPECTS

On November 2, 2021, deputies with Constable Mark Herman's Office responded to the Purple Haze Smoke Shop located in the 2300 block of FM 1960 in reference to an aggravated robbery.

Upon deputies arriving, store employees advised that three black males entered the business and one of the males approached the counter with a handgun demanding the money while the other two stood at the door.... [See more](#)



- Concealable
- Removable
- Available
- Valuable
- Enjoyable
- Disposable



05/05/2022

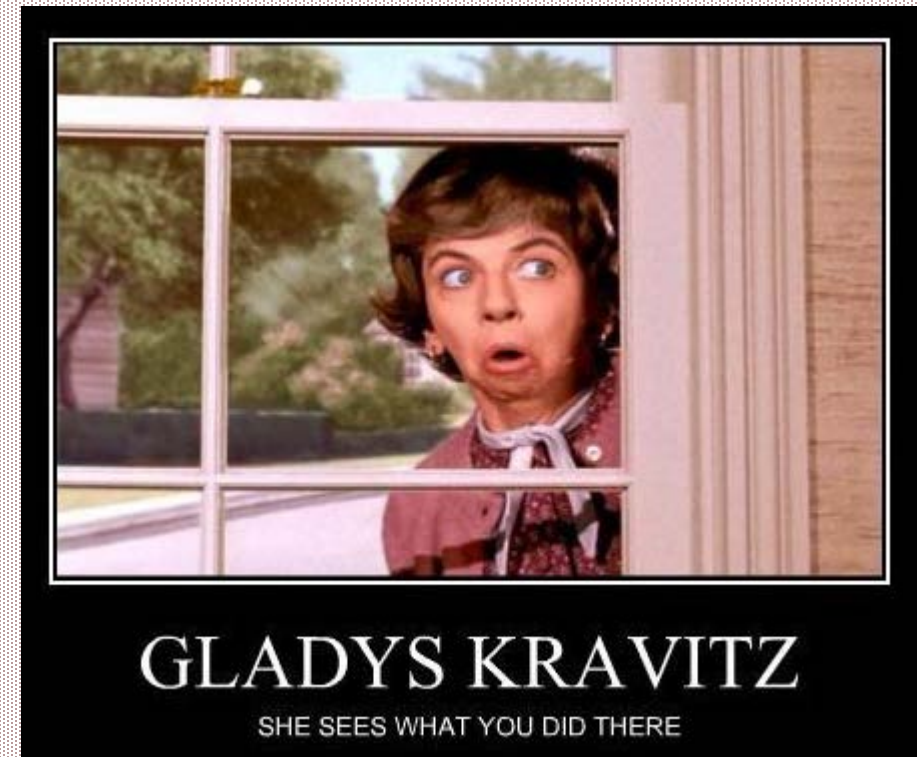


A CAPABLE GUARDIAN

A capable guardian has a 'human element', that is usually a person who, by their mere presence, would deter potential offenders from perpetrating a crime.

Some examples of capable guardians are:

- Police Patrols
- Vigilant Businesses and Patrons
- Vigilant Neighbors
- Mrs. Kravitz...



A MOTIVATED OFFENDER

Routine activity theory looks at crime from an offender's point of view.

A crime will only be committed if a likely offender thinks that a target is suitable and a capable guardian is absent.

It is the offender's assessment of a situation that determines whether a crime will take place.



Routine activity theory as a crime prevention methodology focuses on essential elements that make up a crime.

The most effective crime prevention strategies will focus on all three of these elements.

However, this theory provides a framework within which to prevent crime through altering at least one of these elements.



**WHILE THE POLICE HAVE THE
RESPONSIBILITY FOR ORDER
MAINTENANCE, THE PRESENCE
OF POLICE AUTHORITY ALONE IS
NOT ENOUGH TO MAINTAIN A
SAFE AND CRIME-FREE
COMMUNITY. – OSCAR NEWMAN**



WHO ELSE IS RESPONSIBLE FOR CRIME PREVENTION IN THE COMMUNITY?

- Community members
 - Public Officials
 - Business Owners
- Apartment Managers
- Neighborhood HOAs
- Non-profit Organizations
- Other Political Subdivisions



REAL CHALLENGES

- Year to Date Crime Statistics for District 1 Through June 2021
 - Arson – 25 cases (+108% YTD)
 - Assault – 488 cases (+15% YTD)
 - Theft – 1555 cases (+12% YTD)
 - Auto Theft – 564 cases (-3% YTD)
 - Burglary Building – 169 cases (-2% YTD)
 - Dispatched Calls for Service 121044 (+179% YTD)



THE DECLINE OF FM1960 CORRIDOR

- History- Oil Boom, How it became “The” area
- Indicators for a worsening economic outlook
 - Empty Doors
 - Unkept landscape
- Online Shopping- the “easy” one to blame for empty doors
- Jobs- They are available
- Public Housing/ Section 8
- Services that are available to the area, but often overlooked
- Lack of unified LE approach
- Everyone Else’s issue
- Responsibility of property owners
- Other attempts to fix
- Previous Management District Attempt



VISIBLE ISSUES

Graffiti

Vandalism

Homelessness

Beggars

Trash

Signs

Lighting

Abandoned Buildings

Illegal Signs/Bandit Signs

**Poorly Maintained Buildings/Parking Lots/
Landscapes**

SOB'S, Smokeshops, Massage

Covered Windows

Human Trafficking





hu·man traf·fick·ing

noun

the unlawful act of transporting or coercing people in order to benefit from their work or service, typically in the form of forced labor or sexual exploitation.

"she is a victim of human trafficking"

Definitions from Oxford Languages

Fe



TYPES OF HUMAN TRAFFICKING

ALL ARE CYCLICAL

- **Sex Workers-**
 - All Ages
 - Male and Female
 - All Races
- **General Labor-**
 - Yard Workers
 - Laborers
 - Skilled work if they know how
- **Ownership-**
 - Immigrants are at high risk. They may pay someone to get them to the US, and they will never make enough to pay them back.



SOLUTIONS, MECHANISMS AND ORDINANCES IN PLACE

- Chapter §243 Code of Texas, Sexually Oriented Businesses

Sec. 243.001. PURPOSE; EFFECT ON OTHER REGULATORY AUTHORITY. (a) The legislature finds that the unrestricted operation of certain sexually oriented businesses may be detrimental to the public health, safety, and welfare by contributing to the decline of residential and business neighborhoods and the growth of criminal activity. The purpose of this chapter is to provide local governments a means of remedying this problem.

(b) This chapter does not diminish the authority of a local government to regulate sexually oriented businesses with regard to any matters.

- Camping, Title 11 Public Safety, Chapter §364

Sec. 364.002. POLICY ON CAMPING BANS. (a) A local entity may not adopt or enforce a policy under which the entity prohibits or discourages the enforcement of any public camping ban.

(b) In compliance with Subsection (a), a local entity may not prohibit or discourage a peace officer or prosecuting attorney who is employed by or otherwise under the direction or control of the entity from enforcing a public camping ban.

(c) This section does not prohibit a policy that encourages diversion or a provision of services in lieu of citation or arrest.

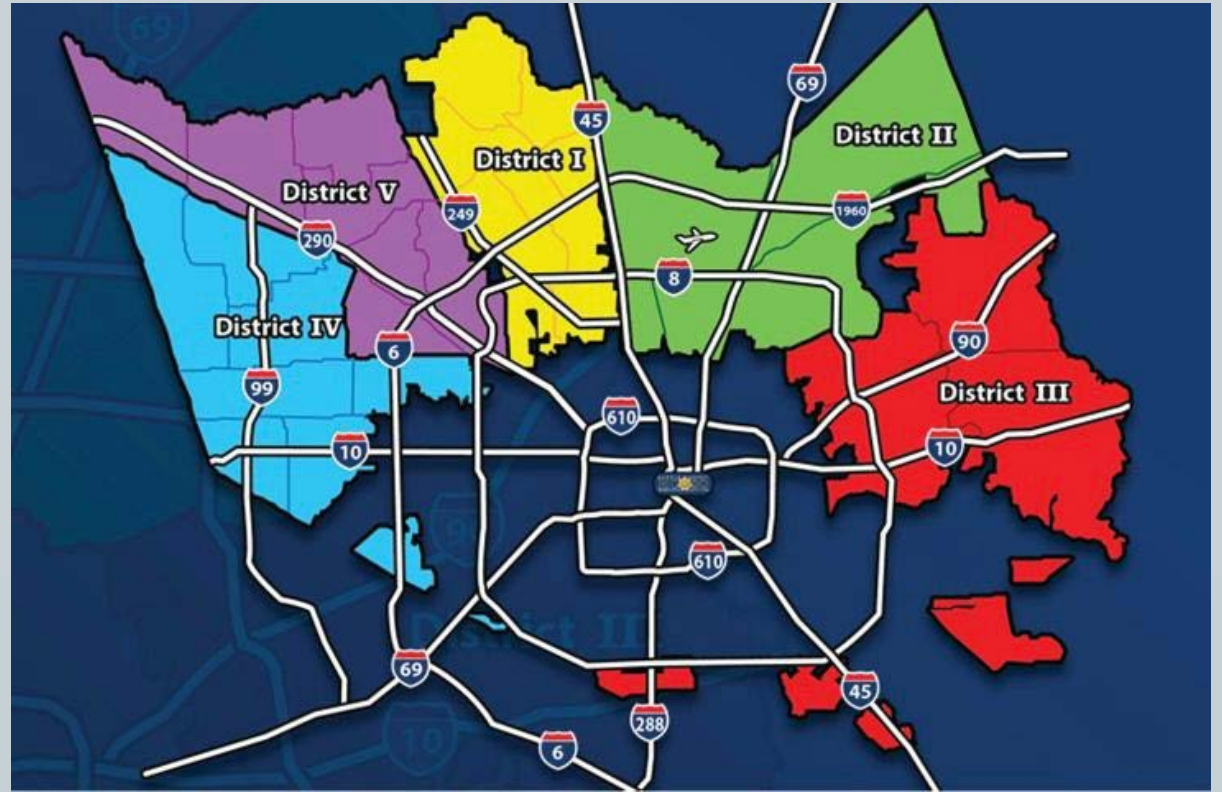
- Graffiti Removal Chapter §250.006

§250.006(a) Except as provided by Subsection (h), a county by order or a municipality by ordinance may require the owner of property within the jurisdiction of the county or municipality to remove graffiti from the owner's property on receipt of notice from the county or municipality.

- Nuisance Abatement Chapter §343 Texas Health and Safety Code



HARRIS COUNTY SHERIFF'S OFFICE AREA



Harris County Sheriff's Office

Contract Deputy Program						
November 2021	District 1	District 2	District 3	District 4	District 5	BUREAU TOTAL
# Contracts	26	14	8	56	26	127
# Deputies	66	47	22	124	68	327
# Supervisors funded by HOA/MUD's	2	3	0	1	4	10

05/05/2022

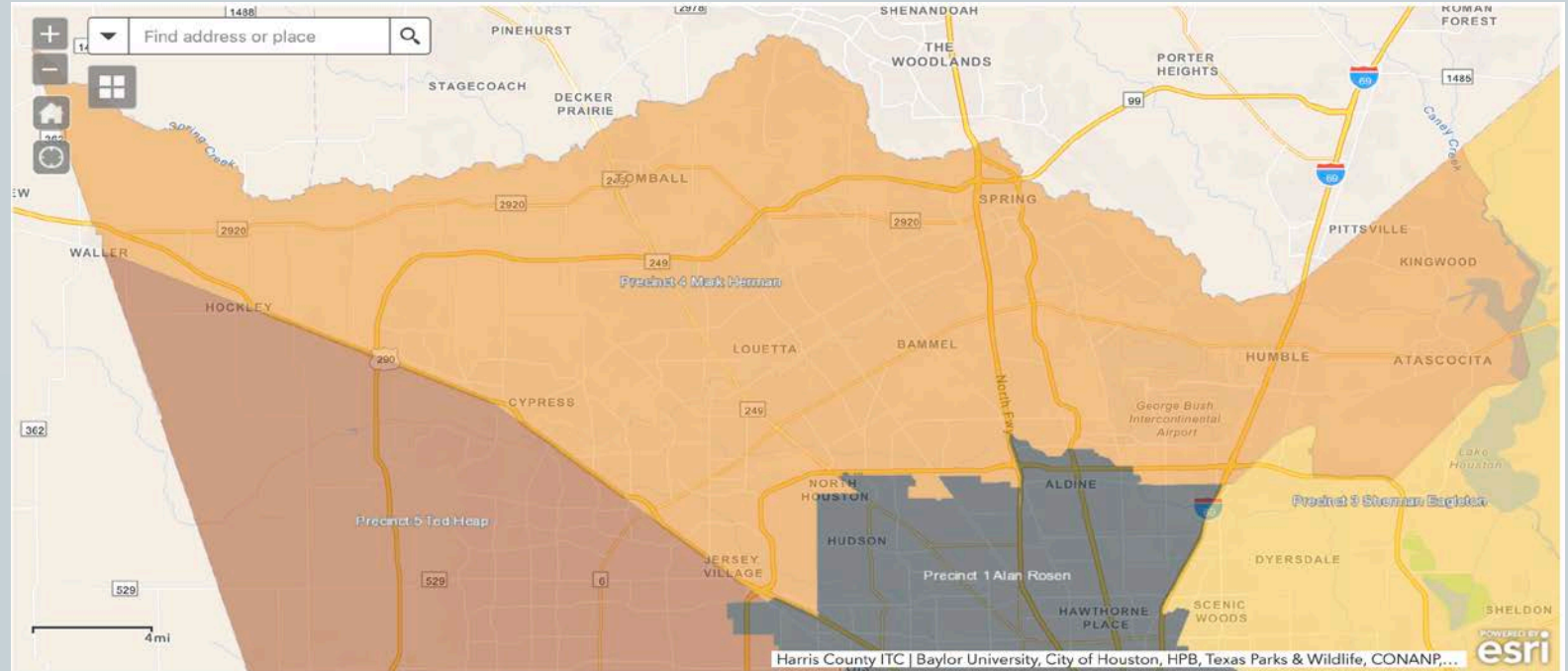


WE ALREADY PAY FOR THIS!!

- **Currently, the amount from all taxpayers covers:**
 - **County Jails**
 - **Transports**
 - **Bailiffs, Court Security**
 - **Investigations**
 - **Homicide/Burglary**
- **A 100% contract with Sheriff's Office is not an option due to staffing and vehicle shortages**
- **These services will all remain in place, with no change to their current service levels**



PRECINCT 4 CONSTABLE'S




Contract Deputy Program Pct 4 Constables

	Central/South Patrol Division	North Patrol Division	West Patrol Division	East Patrol Division	Total
# Of Contracts	23	18	21	34	96
# of Deputies	50	64	64	121	299
# of Supervisors Funded by HOA/MUD's	7	9	12	14	42

05/05/2022



WHAT MAKES THIS DIFFERENT

- 
- Unified Law Enforcement Approach
 - Targeted Teams
 - Contracted Law Enforcement
 - Fire Marshal
 - EMS
 - Adult Protective Services
 - Harris County Dept Of Health and Human Services
 - DPS
 - Nuisance Abatement with existing County Attorney relationship
 - Graffiti Abatement, HCSO (Already in Place)
 - County Attorney's Office
 - Homeless Outreach



WHAT IS THE BEST SOLUTION?

Various avenues were researched and explored;

- **Private Security-** this is a crime/criminal problem, which requires Law Enforcement and various departments to address.
 - Cost prohibitive, staffing to similar proposed levels would cost 3x as much with no arrest powers or existing multi-agency relationships.
- **Harris County Sheriff's Office-** Lack of manpower to have dedicated deputies on this large of a scale, with no ability to ramp up to service area.
- **Precinct 4 Constables Office-** Ability to ramp up to coverage, experienced in providing contract services, involved in multi-agency solutions.



WHAT DOES 100% CONTRACT MEAN?

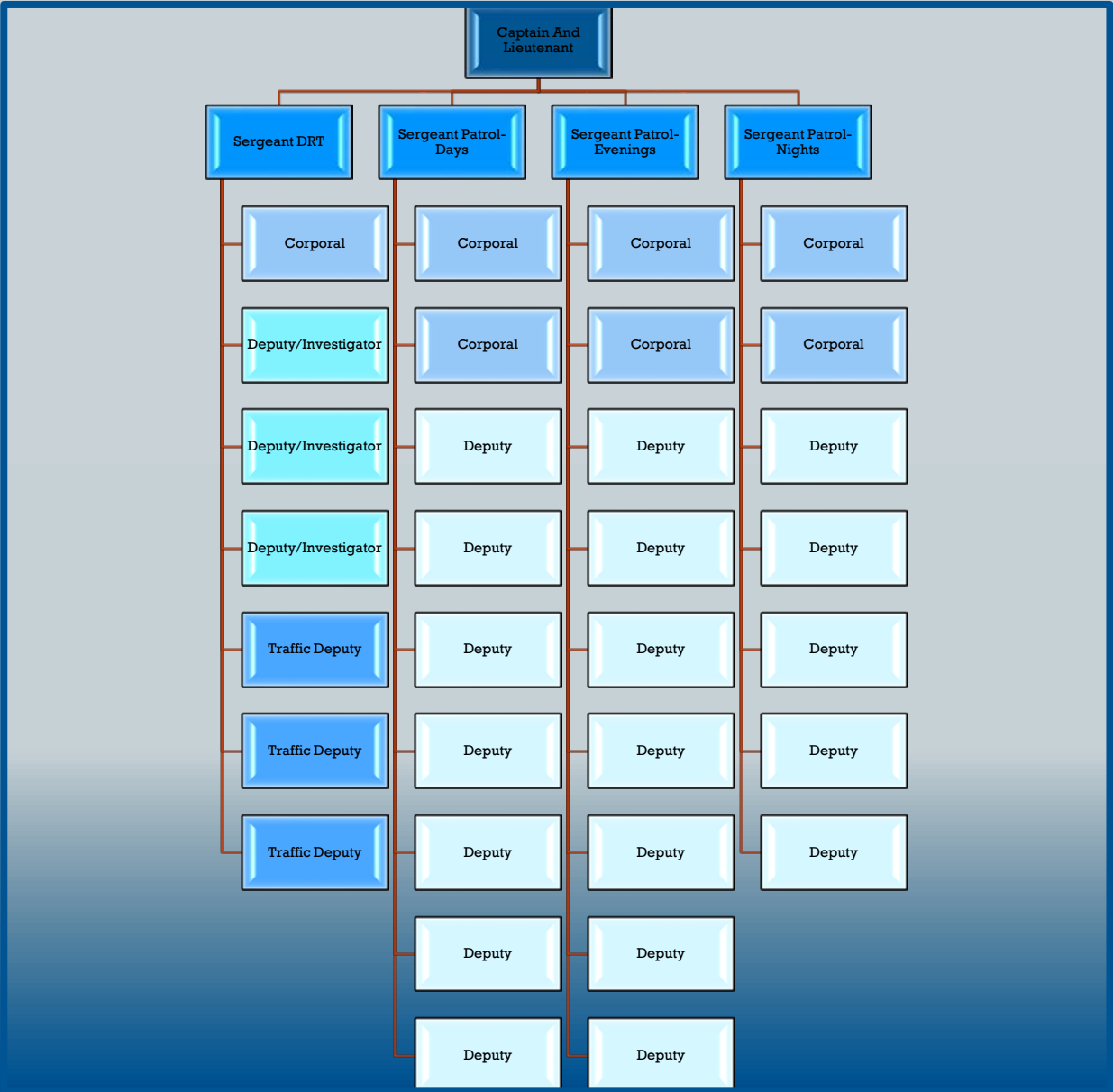
- 100% Dedicated Division
 - 24 Hour Patrol and Supervision
 - Deputies do not leave the contract to take District Calls
 - Deputies will leave contract to transport to jail, hospital, conduct district business
 - Deputies only leave the Contract for Officer Down/Assist calls
-
- How is this different than the 70/30 Contracts most are familiar with?



Proposed Organizational Chart



*32 Deputies



PRECINCT 4 CONSTABLE'S PROPOSAL



■ 100% Coverage

- 36 Total Sworn Positions
 - 1 Lieutenant
 - 4 Sergeants
 - 7 Corporals
 - 24 Deputies

Position	Number	Cost	Total
Lieutenant	1	\$ 147,423.00	\$147,423.00
Sergeant	4	\$ 120,021.00	\$480,084.00
Corporal	7	\$ 106,238.00	\$743,666.00
Deputy	24	\$ 106,238.00	\$2,549,712.00
			\$3,920,885.00



HOW WILL THE DISTRICTS PAY FOR THE SECURITY SERVICES?

- Section 49.2122 of the Texas Water Code
 - Section 49.2122 allows Districts to establish different charges, and fees among different classes of customers.
 - In establishing those charges and fees, the District may factor “costs to the district for security.”
 - A District can institute a security fee in many ways as part of its water or sewer rate for any customer classes including:
 - A flat fee;
 - Based on usage;
 - Based on square footage; and
 - Based on water usage.



FUNDING SCHEDULE

1 Year/3 phase funding schedule for Constable Contract Proposal

Percentages are the average of four criteria (assessed value, # of commercial properties, WCESFU, total area)

JurName	Avg % of 4 criteria	Phase	Phase 1 %	Phase 1 (4 mo)	Phase 2 %	Phase 2 (4 mo)	Phase 3 %	Phase 3 (4 mo)	Total Annual Year 1	Total Annual Year 2+
WESTADOR MUD	6.62%	1	100%	\$ 86,456	100%	\$ 86,456	100%	\$ 86,456	\$ 259,367	\$ 259,369
C N P UD	15.30%	1	100%	\$ 199,970	100%	\$ 199,970	100%	\$ 199,970	\$ 599,910	\$ 599,916
HARRIS COUNTY WCID 091	2.51%	1	100%	\$ 32,827	100%	\$ 32,827	100%	\$ 32,827	\$ 98,482	\$ 98,483
HARRIS COUNTY MUD 058	1.35%	2	50%	\$ 8,808	100%	\$ 17,617	100%	\$ 17,617	\$ 44,042	\$ 52,851
HARRIS COUNTY MUD 233	2.77%	2	50%	\$ 18,123	100%	\$ 36,247	100%	\$ 36,247	\$ 90,617	\$ 108,742
PONDEROSA FOREST UD	9.09%	2	50%	\$ 59,407	100%	\$ 118,813	100%	\$ 118,813	\$ 297,033	\$ 356,443
NORTHWEST HC MUD 020	2.98%	2	50%	\$ 19,487	100%	\$ 38,974	100%	\$ 38,974	\$ 97,435	\$ 116,923
HARRIS COUNTY MUD 044	2.81%	2	50%	\$ 18,349	100%	\$ 36,698	100%	\$ 36,698	\$ 91,746	\$ 110,096
HARRIS COUNTY MUD 016	3.51%	2	50%	\$ 22,905	100%	\$ 45,810	100%	\$ 45,810	\$ 114,525	\$ 137,431
HARRIS COUNTY MUD 191	9.65%	3	25%	\$ 31,520	50%	\$ 63,039	100%	\$ 126,078	\$ 220,637	\$ 378,239
CY-CHAMP PUD	5.73%	3	25%	\$ 18,711	50%	\$ 37,422	100%	\$ 74,844	\$ 130,977	\$ 224,534
FOUNTAINHEAD MUD	5.34%	3	25%	\$ 17,441	50%	\$ 34,881	100%	\$ 69,762	\$ 122,084	\$ 209,289
NORTHWEST HC MUD 021	2.81%	3	25%	\$ 9,181	50%	\$ 18,363	100%	\$ 36,726	\$ 64,270	\$ 110,179
BAMMEL UD	3.13%	3	25%	\$ 10,225	50%	\$ 20,450	100%	\$ 40,900	\$ 71,575	\$ 122,701
HEATHERLOCH MUD	1.90%	3	25%	\$ 6,217	50%	\$ 12,435	100%	\$ 24,869	\$ 43,521	\$ 74,608
HARRIS COUNTY WCID 109	11.09%	3	25%	\$ 36,236	50%	\$ 72,472	100%	\$ 144,945	\$ 253,653	\$ 434,839
HARRIS COUNTY WCID 116	3.91%	3	25%	\$ 12,770	50%	\$ 25,539	100%	\$ 51,079	\$ 89,387	\$ 153,237
CHAMPIONS MUD	5.05%	3	25%	\$ 16,491	50%	\$ 32,981	100%	\$ 65,962	\$ 115,434	\$ 197,888
	100.00%									
TOTAL REVENUE				\$ 683,495		\$ 989,366		\$ 1,306,949	\$ 2,979,810	\$ 3,920,885



THE CRYSTAL BALL....

- We have no way of knowing what the future holds, but we do know if we don't act now, there will be no future in the area for any of us.

Sunset Provision- Open to Renewal



QUESTIONS?





NEW COMMISSIONER PRECINCTS

